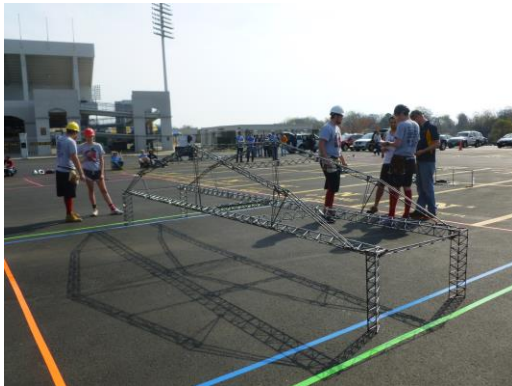




### Concrete Canoe

Concrete Canoe designs and constructs a fully-functional concrete canoe. The team competes in regional and national competitions with scoring based on real race performance and production/design characteristics. *Project Managers: Craig Lampmann, Phil Izzo*

### Steel Bridge



The Steel Bridge team designs and constructs a bridge which is rated amongst real-world guidelines, including limited material, labor costs, and construction speed. *Project Managers: Emily Kriz, Ross Jespersen*

## Who We Are

### About Us

The American Society of Civil Engineers (ASCE) is a national organization founded in 1852. ASCE is the oldest American engineering society. At The University of Maryland, we seek to achieve goals set by the national society by connecting over 300 engineering students with peers, employers, and opportunities for real-world engineering applications. UMDASCE sponsors the Concrete Canoe and Steel Bridge teams.

### Executive Board

President: Jonathan Schneider  
VP of Operations: Rachel Grafman  
VP of Finance: Matthew Littenberg  
Treasurer: Katherine Owens  
Secretary: Jamey Campbell  
Social Chair: Jamie Richardson  
Webmaster: Maya Lieber  
ESC Liason: Kelsey Kenel  
*Contact us at [UMDASCE@gmail.com](mailto:UMDASCE@gmail.com)*

## THE AMERICAN SOCIETY OF CIVIL ENGINEERS



2014-2015

NEW  
MEMBER  
BROCHURE



## What do Dues do?

While ASCE receives support from corporate sponsors, we could not continue operation without the help of our members. Your dues go towards paying for general body meetings, lounge maintenance, Baltimore meetings, and supporting ASCE-related activities such as Concrete Canoe and Steel Bridge.

Once you have paid dues, you have access to the student lounge and ASCE sponsored events and activities.

## OrgSync

**Sign up for OrgSync to stay connected**

OrgSync is a university-endorsed website that allows students and organizations to stay connected. On OrgSync, you will be able to communicate to other UMDASCE members as well as receive important announcements about upcoming events and general body meetings.

**OrgSync is where lounge access codes and test bank access are posted.**

How to sign up:

1. Go to  
  
<https://orgsync.com/register/university-of-maryland>
2. Once signed in, search for ASCE and click on "American Society of Civil Engineers"
3. On the ASCE page, click on the green "join now" square on upper right corner

## Test Bank Access

In order to receive access to the test bank, you MUST submit at least two exams from any ENCE or ENES 100,102,220,221 classes. The grade on the exam is not important.

How to submit exams:

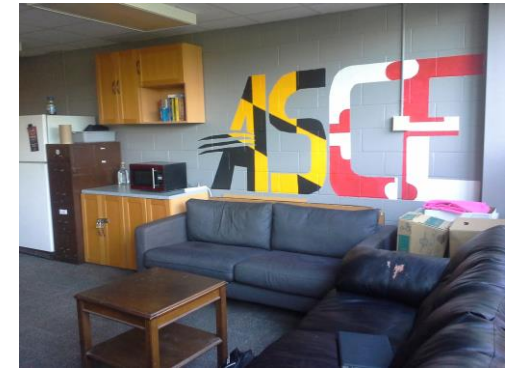
1. Scan exams into separate PDF files.  
Make sure to have each PDF exam file labeled as follows:

**classID\_Professor\_SemesterYear**

For example, ENCE100 taken with Dr. Brubaker in Fall 2010 would be labeled as

**ENCE100\_Brubaker\_Fall2010**

2. Send an e-mail to [ascetestbank@gmail.com](mailto:ascetestbank@gmail.com) with PDF exam files as attachments, make sure to include **your name and UID in the body of the email.**
3. Plan accordingly and get exams in sooner rather than later. Access to the test bank will be given via OrgSync once a week, Friday, after your exams are submitted. You can access the test bank on the ASCE OrgSync page under "Files"



## The ASCE Student Lounge

**In room EGR 1103; near the food court**

The student lounge is a general meeting place for ASCE student members.

### Amenities

- Soft leather couches
- Microwave
- Refrigerator
- Large study tables
- Plentiful office chairs
- Whiteboard
- Numerous outlets for charging
- Open 24 hours

Feel free to come take a nap, work on group projects, watch youtube, or even pull all-nighters.

### ACCESS CODE

The lounge access code can be viewed via OrgSync under "Files" on the Friday (after 3pm) after dues have been paid.

**\*\*Please do not share with others, especially those who are not paying dues.**